

II. LITERATURE REVIEW

2.1 History of Constellation

According to Gleadow (2001), the word zodiac was taken from the ancient Greek word, *zodiakos*, which means (a circle) ‘of animals.’ Around 500 B.C. in Babylonian, zodiacal constellations reached its classical form, which later adopted in Greece. The first that had been established are the Taurus, Leo, Scorpius, and Aquarius. The next zodiacal constellations are Gemini, Virgo, Sagittarius, Pisces, and Capricornus, which was developed during the 3rd – 2nd millennium B.C. Aries, Cancer, and Libra were the last and least perceptible of the zodiacal constellations (Rogers, 1998). Zodiac developed and spread in stages up to the 6th century B.C. when the twelve constellations were defined with equal boundaries. Zodiac is a circle of twelve constellations lying along the path of the sun, which can measure the positions of the sun, moon, and planets (Gleadow, 2001). The twelve signs or constellations are equally divided by 30 degrees (Fletcher, 2009).

The constellations in the direction of the moon were specified early, and the path of the sun between the stars determined by a precise calculation and reasoning (Waerden, 1952). In 5600 B.C., the constellations were used by the farmers as an agricultural calendar, which is retraced the annual way of the sun upon the starry background (Gurshtein, 1998). It was also used by the Greeks to determine the time, which divided the night and day into twelve seasonal hours each (Waerden, 1952).

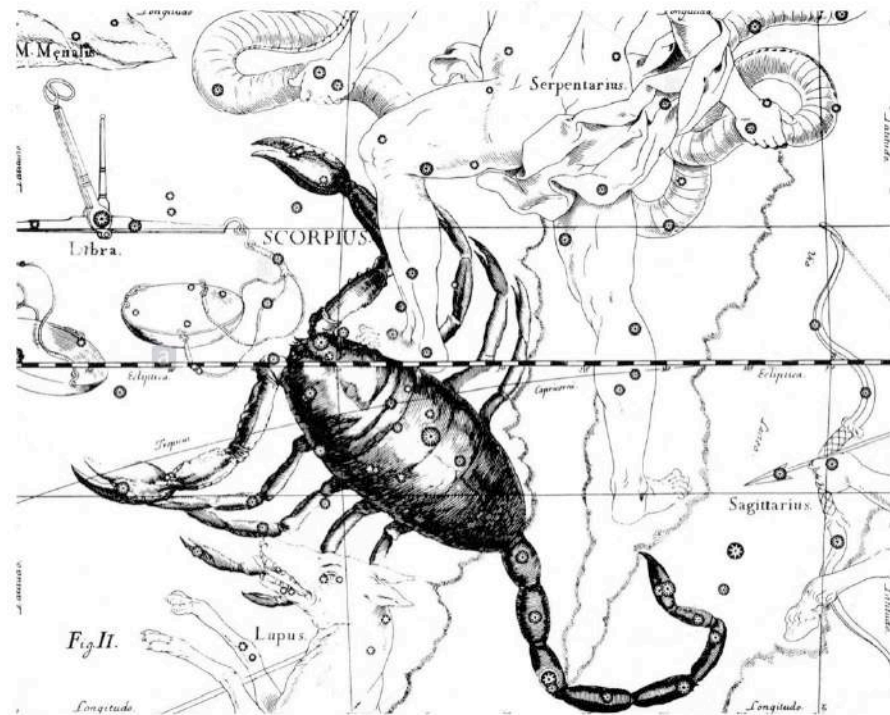


Fig 2.1 Scorpius Constellation
 Source: <https://www.alamy.com/>

Each of the zodiacal constellations marked the solar position at key moments of the year cycle, specifically days of the equinox and solstices at a certain period. In 6000 – 4000 B.C., the first four constellations of Gemini, Virgo, Sagittarius, and Pisces mark the points. Between 4000 and 2000 B.C., the precession of the Sun guide to another four of constellations, which are Taurus, Leo, Scorpio, and Aquarius. Around 1200 B.C., the precession put together a further set of constellations and signed by Aries, Cancer, Libra, and Capricorn, which fulfilled the evolution of zodiac (Kaurov & Raevsky, 1997). The one that is going to explain deeply is the 10th sign of the zodiac, which is the Scorpio sign.

2.2 Scorpio Sign

“Scorpio” is the latin word for “scorpion”, which is the eighth sign of the zodiac. It is known as the most complex character of the entire zodiac, which is a sign for those born 23rd October to 21st November. Symbolized by the figure of a scorpion and the eagle, the pictograph of Scorpio (♏) is a curved line, and an arrow represents strong emotions tied to practicality and aiming toward higher consciousness (Woolfolk, 2006). Colors that represent a Scorpio are black and red, especially in crimson, burgundy, and maroon shade, known as the glowing colors of passion. The red colors also represent the planet of mars whose ruled the Scorpio sign (Fletcher, 2009).

2.2.1 Characteristics of Scorpio

Dark and mysterious are the best words to describe the personality of a Scorpios. A Scorpio may seem tough and strong on the outside, and sometimes people see them as ignorant individuals. In fact, they are quite an emotional individual and manage to keep their emotions hidden. A Scorpio sign individual is the kind of person who unable to express how they feel towards anyone or anything (Johnstone, 2012). Nevertheless, how aroused a Scorpios’ emotions are, it is hardly ever reflected on their face. A Scorpio retains its features and reaction to the slightest (Goodman, 1984). It is hard for anyone to know what is going through Scorpios’ minds because they prefer not to tell anyone about their thoughts and tend to keep them privately.

Scorpio can be described as a passionate, organized, honest, trustworthy, funny, reliable, loving, charming, and protective person. Sometimes, they can be a little bit too possessive to someone because of the feeling of jealousy. They are creative people that gifted with the ability to seek genuinely into things and a magnificent sight for details. They are born as a kind, caring, loyal person and will do anything for their loved ones (Johnstone, 2012). They can also be very straightforward when giving opinions or judgment to others, which sometimes can cause people to hurt by their words (Heindel & Heindel,

2011). A Scorpio can be powerful but also weak, independent, clinging, passionate, and cold (Woolfolk, 2006).

In others' perspectives, a Scorpio often judged as an ambitious and over-controlling person. But they also an individual who can be put one's trust in because they always keep their promises. Be careful when talking to a Scorpio because they can get easily offended and upset by the harsh actions and words, especially from loved ones. When a Scorpions got hurt very badly, they never forgive the pain and will remember it forever, same ways as they remember every kindness (Woolfolk, 2006). In reacting to an injury, a Scorpio may have several ways. Like an eagle, they will harm the enemy to never hurt them again. Meanwhile, some who like a nocturnal scorpion will sting and plan a way to tear down the enemy, and will sting again (Goodman, 1984).

2.2.2 Scorpio Fashion Style



Fig 2.2 Scorpio Fashion Style – Kendall Jenner
Source: harpersbazaar.com

A Scorpio is intense, bold, and fearless. They are the kind of person who is not afraid to express their mind and are very passionate about their feelings. The style of a Scorpio woman can be powerful and sexy. They love the classy look with a little twist. Scorpio woman is an emotional individual who tends to have a feminine core. They don't usually express their feminine side on how they dress, and would rather put on an in all black clothes (Bell, 2018).

Scorpio woman likes to attract people's attention with their appearance, and brave enough to show some skin and to be stand out with bold colors such as reds, purple, and black (Torgerson, 2018). They have a sensual and alluring fashion sense and love the dark Gothic style (Murphy, 2018). A touch of leather and bold colors to the look fit the dynamic vibe of a Scorpio woman.

2.3 Gothic Subculture

Gothic subculture is emerging from the British punk rebellion of the late 1970s, gothic spread quickly and remains concentrated in Britain, the United States, and Germany (Bush, 2018). Gloomy and mysterious have been linked to the characteristic of goth, which signaled the reappearance of terror and laughter spirit (Botting, 1996).

2.3.1 Gothic Style

The arising of goth style character is came from the influence of music and its performers in the early 1980s. Dark, macabre, and sinister are designated as the music that is related to the goth scene. The band Bauhaus and Siouxsie and the Banshees are the stars who influenced the dark femininity (Hodkinson, 2002). The concept of the dark was portrayed by the back-combed black hair with the touch of heavy dark make- up that emphasizes the eyes, lips, and cheekbones (Bush, 2018).

Bauhaus's performance in their song called is 'Bela Lugosi's Dead' has become the starting point of goth. The scene of their performance embraced the

various elements of goth, such as the macabre tone and tempo, the song's lyrics, the deep spine-chilling vocals, to the androgyny style in the band's appearances (Hodkinson, 2002). Gothic has been identified with the form of femininity for both genders. As stated by Brill (2008), the androgynous style for the males represents the feminized style as the expression of masculinity, which admired by their confidence, and courage. The hypersexuality manner is applied through a highly sexualized dress for women and men's transvestitism.

The male embraces femininity through their style, starting from the long black hair, the use of skinny fitted clothes with delicate fabrics, and black jewelry with skull and magical symbols embellishment (Bush, 2018). The major elements of the style for both genders were a ripped fishnet, and various see-through cloths that are made as tops and stockings, and distinctive make up (Hodkinson, 2002).



Fig 2.3 Siouxsie Sioux
Source: imdb.com



Fig 2.4 Bauhaus
Source: Pinterest
Uploaded by Tabitha Burston

Meanwhile, for the females, they much adapted the style from the eighteenth and nineteenth-century fashion that were combining the Victorian dress' essentials with contemporary fashion details (Bush, 2018). Patricia Morrison and Julianne Regan was the influence the women in wearing dark-colored corsets, bodices, lacy dresses, and velvet top that was inspired by the goth and vampire fiction (Hodkinson, 2002).

2.4 Between Fashion and Personality

Clothing has been believed to reflect or express a certain person's identity, personality, or moods. Due to the purpose that clothing can serve plus its colors, materials, textures, and shapes, clothing can play a part in a certain individual's mood. For example, a person's mood could be changed because the clothes they use might be attractive, conceal the flaws, enhance the individuality, and increase their confidence (Kallstrom, 2009).

The proximity of clothing to self (PCS) is conceived as the psychological closeness of clothing to self. Sontag & Schlater (1982) found the following: PCS is indicated by the extent to which clothing is (1) perceived as one with the self or as a component of the self, (2) recognized as an aspect of appearance by which the self is established and validated, (3) recognized as a

significant symbol of one's identity, mood, or attitude, (4) perceived as an expression of self-regard or self-worth, (5) recognized as an element of affective response to self-evaluation, or (6) related to body cathexis. (p. 43)

Clothes are often viewed as a self- construction, which reflects to the saying 'clothes were seen as one with the self'. A person who owns this point of view strives for the reliability between fashion or clothing with self-image. There are evidence that indicate an individual who believe clothing express a personality, self- regard, beliefs, and mood of a person (Sontag & Lee, 2004).

From the survey conducted by (Kang, Johnson, & Kim, 2013), it was found that people believe clothing as a medium that helps to create and complete an ideal appearance that can reinforce the agreement of perfectionist with a statements 'clothing allows me to be the individual I want to be' and 'the type of person I am, reflected in my clothing.'

2.5 Demi-Couture

Demi-couture has been rising in the last decade in the industry of fashion. It offers delicately handcrafted pieces as the haute couture without the individual fitting (Dizik, 2015). Demi-couture is made to fit the standard sizes as it is available in the retail stores, unlike the haute couture that requires personal measurements. It cost above the average of ready-to-wear pieces, but it still far below the haute couture pieces.

Designers such as Alexander McQueen, John Galliano, Valentino, and Mary Katrantzou were creating a demi-couture collection that unites the haute couture-level of cutting, the intricate details, embroidery, magnificent silhouette and rare materials into a unique, wearable piece of art (Tan, n.d.). Demi-couture could allow the designers to produce a small number of desirable pieces to fulfill an increasing demand for the exclusive.

The demi-couture collection also gives the designers the opportunity to show a high level of craftsmanship without sacrificing a high level of resources (Zerbo, 2014). Just like ready-to-wear, demi-couture collection was produced in higher number and faster than the haute couture. In fact, haute couture has to obey the standard regulation by the French Ministry of Industry, which the fashion houses need to maintain a Parisian workroom with a minimum of 20 members of staff and also has to produce not less than 25 outfits per season (Fury, 2017). In order to create haute couture pieces, it needed 2,000 hours of cutting and 4,000 hours of sewing to make one look at the collection. Meanwhile, it takes not that much of time to produce a ready-to-wear and demi-couture pieces.

As for the consumers, demi-couture is an enticing option. The divine beaded gown on the runway can be owned for less than a third of it will be paying in an haute couture pieces (Tan, n.d.). Demi-couture is offering off-the-rack couture-quality that is made to fit standard sizing of S, M, L, and XL, that is available in retail stores, for example, in Harrods London, and Colette Paris, and Neiman Marcus in the United States. Demi-couture pieces cost 10% to 20% of the haute couture price and can be ordered directly through the retailer since it is not stored on the floor (Dizik, 2015).

Demi-couture gives consumers more experiences alongside in a line by the aesthetic of the clothing as they look for items that can be treasured for long period of time, which is becoming a plus point (Conlon, 2018). These are the opposite of seasonal garments that change every year like it was from S/S 2014 to S/S 2015. In addition, the quality of demi-couture has risen above the disposable nature of many items of the garment. This could be valuable to the allurements of creating a collection of clothes that is meant to last, and slowly moving towards a more steady-paced cycle of fashion (Zerbo, 2014).

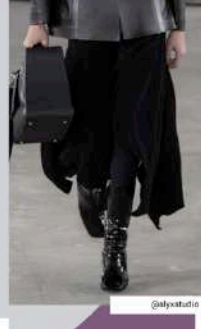
2.6 WGSN

The author applies the trend of Spring/Summer 2021 for women collection from the WGSN. The trend that is suitable for the author's collection is the TransForm trend. As seen in Figure 2.5 and Figure 2.6, the mood for the collection is bold and mysterious, which there will be used a lot of dark elements, including colors.



Fig 2.5 TransForm: Women's Style Trend Concepts S/S21
Source: www.wgsn.com

The Dark Night



Darkness will continue to permeate fashion, as creatives draw on tough times to help us find a new light

- #Blackout isn't a story reserved just for autumn – it also creates a strong statement for head-to-toe summer looks, which can transcend seasons
- Break up looks with contrasting textiles for a mix of hard and soft, combining pleats and ethereal sheers with tough #bikerjackets
- Explore handwritten poetic phrases as slogans for a time of hope
- Drop: Summer Transitional

Key for prints & graphics

WGSN

Fig 2.6 TransForm: Women's Style Trend Concepts S/S21
Source: www.wgsn.com

Colors that will be used on the collection will be a combination of several dark colors. As seen in figure 2.7 and 2.8, the colors are black, and several shades of reds such as maroon, burgundy, and crimson that represents the zodiac of Scorpio, which means as the glowing color of passion.



Fig 2.7 WGSN Color References S/S21
Source: www.wgsn.com

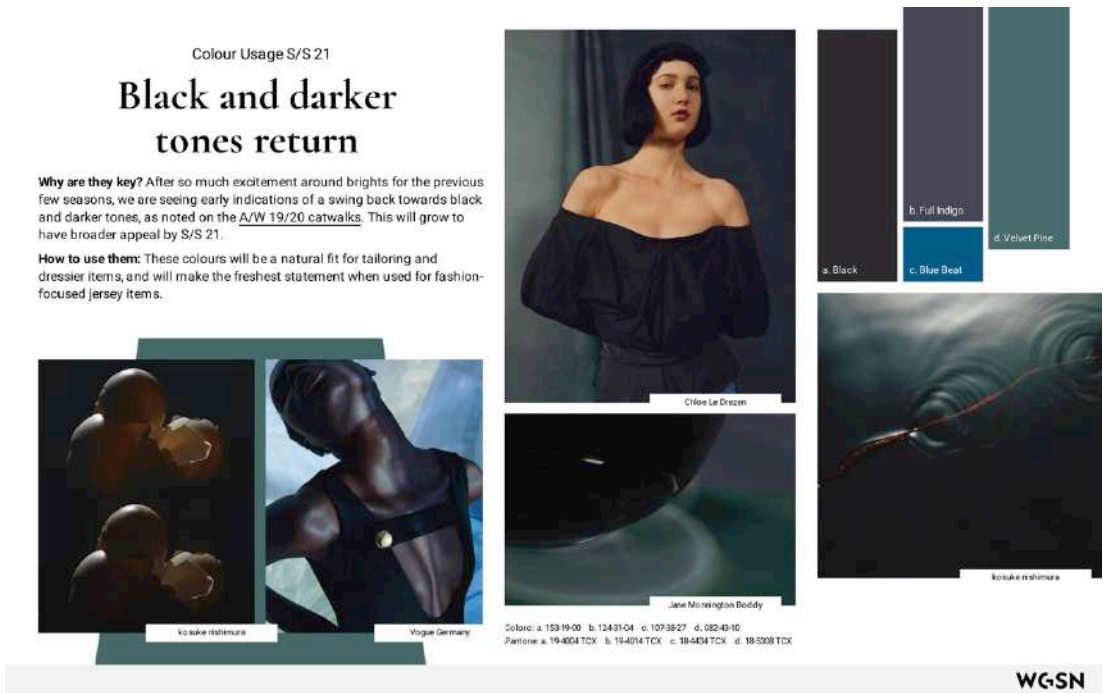


Fig 2.8 WGSN Color Usage S/S21
Source: www.wgsn.com

Using structured shapes as the piece of the collection, the author wants to represent the shape of a scorpion body into piece of garment. Figure 2.9 shows the concept Abstructure that is similar since it portrays the structural shapes from the architecture.



Fig 2.9 TransForm: Women's Style Trend Concepts S/S21
Source: www.wgsn.com

2.7 Theory of Color

According to Itten (1970), color is defined as:

“Color is life, for a world without colors appears to us as dead. Colors are primordial ideas, children of the aboriginal colorless light and its counterparts, colorless darkness.”

Physiologists have investigated the influence of color radiation on the human mind and spirit, including color symbolism and the subjective perception and discrimination of colors. In this thesis, the theory of color that is going to be discussed is the black and red color, which is the chosen color for the author’s collection.

Black is often associated with mystery, evil, death, and elegance (Cerrato, n.d.). Psychologically, the positive meanings of black color are mysterious, strong, glamour, sophisticated, efficiency, emotional safety, authority, power, comfort, formal, seductive, endings, and beginnings. Moreover, the negative meanings are coldness, aloof, depressing and pessimistic, sadness, secretive (Wright, 2004). The color of black gives the feeling of perspective and depth, and it will provide a good contrast combination with bright colors such as red and other powerful colors. The black color also boosts the self-confidence of an individual (Cerrato, n.d.).

According to (Wright, 2004), red is a powerful color that could grab anyone’s attention. Just like black, the red color also has positive meanings such as strength, courage, energy, excitement, passion, masculinity, warmth, desire, attention-getting, and confidence. And the negative color meanings are aggression, anger, rebelliousness, strain, and violence. Red is an emotional color that enhances human metabolism, which increases respiration rate and blood pressure.

There are several shades of red, which also have its meanings, such as (Cerrato, n.d.):

Light red means joy, passion, sensitivity, and love.

Pink means romance, love, friendship, and feminine.

Dark red means rage, anger, leadership, courage, and longing.

Reddish-brown means harvest and fall.

2.8 Fabric Technique and Treatment

2.8.1 Appliqué

Appliqué is a decorative technique usually used for embellishment. It is a term of adding pieces of material to a base fabric. The fabric motifs can be applied with fusible webbing or stitching (Leslie, 2007).

Fabrics that are commonly used for this technique are cloth, felt, and leather. According to Leslie (2007), there are three main types of applique:

1. Overlaid appliqué is when the pieces are cut and applied on top of the ground fabric that is still visible. Leather and felt are perfect for this technique, as it does not fray.
2. Inlaid appliqué is a technique with a contrasting fabric cut to fit the hole of the ground fabric perfectly.



Fig 2.10 Inlaid Appliqué
Source: Pinterest
Uploaded by Sara Cook

3. Reverse appliqué is when the motifs from the fabric is being cut and edges of the holes is turned to reveal the underneath fabric.



Fig 2.11 Reverse Appliqué
Source: Fabric Manipulation 150
Creative Sewing Techniques

There is another technique of appliqué, which called 3D appliqué that is used for fabric pieces that are manipulation into a form that is attached to the base of the fabric. This created a tightly packed finish using repetitive shapes that comes in layers (Singer, 2013).



Fig 2.12 3D Appliqué - Felt Circles
Source: Fabric Manipulation 150
Creative Sewing Techniques



Fig 2.13 3D Appliqué - Petals
Source: Fabric Manipulation
150 Creative Sewing
Techniques

2.8.2 Crochet

According to Leslie (2007), crochet is a technique of needlework that is done by interlocking looped stitches using a single yarn and hook needle that creates a piece of the fabric structure. It is known in the world of fashion of the western countries at the beginning of the nineteenth century (Palmsköld, 2016).

Crochet required a hook that comes in a variety of sizes, and most importantly, a yarn that comes in different materials, such as wool, silk, and cotton. The chain is the base of crochet work, which produced by a continuation of loops that adapted to each other to create a horizontal line (Leslie, 2007). Not only use as decorative purposes, but crochet could also utilize for household pieces. A variety of patterns and shapes can be produces using this technique, such as squares, circles, and octagons (Sowden, 2015).

There are many variations of crochet stitches that could be shaped into different patterns, but the basics are single crochet stitch, double crochet, half-double crochet, and chain stitch (Ruth, 2020).



Fig 2.14 Single Crochet Stitch
Source: thesprucecrafts.com



Fig 2.15 Double Crochet Stitch
Source: thesprucecrafts.com



Fig 2.16 Half Double Crochet Stitch
Source: thesprucecrafts.com



Fig 2.17 Chain Stitch
Source: thesprucecrafts.com